

WIRE ROPE MOUNT ACC-4010



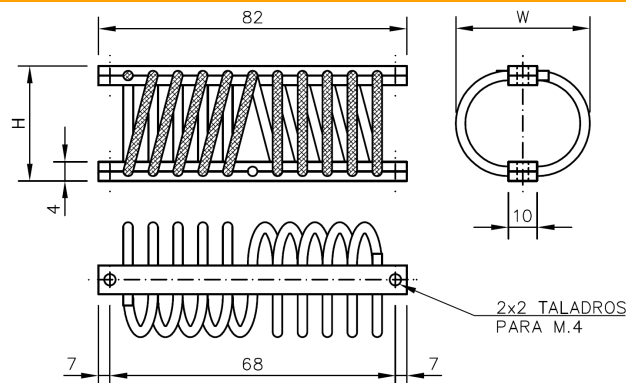
APPLICATIONS

Shock Absorber mount to isolate vibrations and shocks. Initially developed for Military uses but over the years it was adopted for many other industrial and transport applications.

DESCRIPTION

- Stainless Steel AISI 316 wire rope and inserts.
- Retainer Bars: Aluminium 6060-T6, Alodine treatment or stainless Steel upon request.
- Number of Full Loops: 10.
- Non Magnetic.
- Maximum resonance amplitude: 1,5 mm peak-peak.
- Natural frequency: 5 to 15 Hz.
- Damping weight: 0,025 Kg.
- Fastening: M4 or M4 drilled (A= Counterboring, L= Plain, R= Screwed)

DIMENSIONAL FEATURES



PART. NUMBER	H(mm)	L(mm)	CONFIGURATION	Nominal Load (daN)	Nominal Defl. (mm)	K (daN/mm)	Max. Load (daN)	Max. Defl. (mm)	K (daN/mm)
ACC-4010-01	33	38	Compression	1,8-3,2	2,5-5	0,6	8	19	0,3
			Compression 45°	1,4-2,3	2,5-5	0,4	6,1	16	0,3
			Shear	0,4-0,8	2,5-5	0,2	2,8	16	0,2
			Roll	0,6-0,9	2,5-5	0,1	2,8	16	0,2
ACC-4010-02	30	35	Compression	2,2-4	2,2-4,4	0,8	10	17,5	0,5
			Compression 45°	1,9-3,1	2,2-4,4	0,5	7,6	14	0,5
			Shear	0,6-1	2,2-4,4	0,2	4	16	0,3
			Roll	0,7-1,2	2,2-4,4	0,2	3,8	14	0,3
ACC-4010-03	28	34	Compression	2,6-4,5	2-4	1,0	10	13	0,6
			Compression 45°	2,1-3,6	2-4	0,8	6,8	9	0,6
			Shear	0,6-1,2	2-4	0,3	4,1	12	0,4
			Roll	0,7-1,3	2-4	0,3	3,1	9	0,4
ACC-4010-04	20	28	Compression	3,5-6,2	1,2-2,4	2,3	15,5	8	1,7
			Compression 45°	2,7-4,9	1,2-2,4	1,8	12,7	8	1,4
			Shear	0,7-1,4	1,2-2,4	0,6	4,7	8	0,6
			Roll	0,8-1,5	1,2-2,4	0,6	6	9	0,7
ACC-4010-05	26	34	Compression	2,4-4,2	1,8-3,6	1,0	8	8	0,9
			Compression 45°	1,8-3,2	1,8-3,6	0,8	6,6	8	0,8
			Shear	0,7-1,2	1,8-3,6	0,3	2,6	8	0,3
			Roll	0,8-1,3	1,8-3,6	0,3	2,7	8	0,3
ACC-4010-06	18	25	Compression	5,6-10,1	1-2	4,5	22,5	6	3,1
			Compression 45°	4,4-8,1	1-2	3,7	17,8	6	2,4
			Shear	1,1-2,7	1-2	1,6	11	7	1,7

WIRE ROPE MOUNT ACC-4020



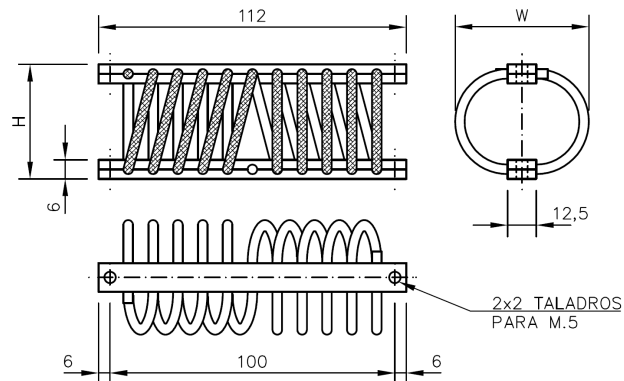
APPLICATIONS

Shock Absorber mount to isolate vibrations and shocks. Initially developed for Military uses but over the years it was adopted for many other industrial and transport applications.

DESCRIPTION

- Stainless Steel AISI 316 wire rope and inserts.
- Retainer Bars: Aluminium 6060-T6, Alodine treatment or stainless Steel upon request.
- Number of Full Loops: 10.
- Non Magnetic.
- Maximum resonance amplitude: 1,5 mm peak-peak.
- Natural frequency: 5 to 15 Hz.
- Damping weight: 0,065 Kg.
- Fastening: M4 or M4 drilled (A= Counterboring, L= Plain, R= Screwed)

DIMENSIONAL FEATURES



PART. NUMBER	H(mm)	L(mm)	CONFIGURATION	Nominal Load (daN)	Nominal Defl. (mm)	K (daN/mm)	Max. Load (daN)	Max. Defl. (mm)	K (daN/mm)
ACC-4020-01	38	43	Compression	4-8,7	2,6-5,2	1,0	21	23	0,8
			Compression 45°	3,1-5,8	2,6-5,2	1,0	12,3	15	0,7
			Shear	1,1-1,8	2,6-5,2	0,3	6,5	18	0,4
			Roll	1,2-2	2,6-5,2	0,3	5	15	0,3
ACC-4020-02	28	33	Compression	9,5-17	1,6-3,2	4,7	36	10	2,8
			Compression 45°	7,2-12,8	1,6-3,2	3,5	22,3	7	2,5
			Shear	2,7-4,5	1,6-3,2	1,1	9,5	7	1,3
			Roll	2,2-4,2	1,6-3,2	1,3	12	10	1,1
ACC-4020-03	25	30	Compression	6-10,5	1,3-2,6	3,5	23	7	2,8
			Compression 45°	5-8,2	1,3-2,6	2,5	18,1	7	2,3
			Shear	2,5-4	1,3-2,6	1,2	10,8	8	1,3
			Roll	2-3,7	1,3-2,6	1,3	13,5	10	1,3
ACC-4020-04	35	42	Compression	10-17	2,3-4,6	3,0	47	18	2,2
			Compression 45°	7,3-13,2	2,3-4,6	2,6	34,1	15	2,0
			Shear	2,8-5,1	2,3-4,6	1,0	16,2	15	1,1
			Roll	2,9-5,4	2,3-4,6	1,1	18	16	1,1
ACC-4020-05	31	39	Compression	10-18	1,9-3,8	4,2	48	13	3,3
			Compression 45°	8,1-15,3	1,9-3,8	3,8	41	13	2,8
			Shear	3,6-6	1,9-3,8	1,3	18,5	13	1,4
			Roll	3,9-6,8	1,9-3,8	1,5	24	14	1,7
ACC-4020-06	21	29	Compression	7-13	0,9-1,8	6,7	35	7	4,2
			Compression 45°	5,7-8,8	0,9-1,8	3,4	28,2	7	3,7
			Shear	1,9-3,9	0,9-1,8	2,2	12,5	7	1,7
			Roll	2-3,9	0,9-1,8	2,1	15,5	8	1,9

WIRE ROPE MOUNT ACC-4030



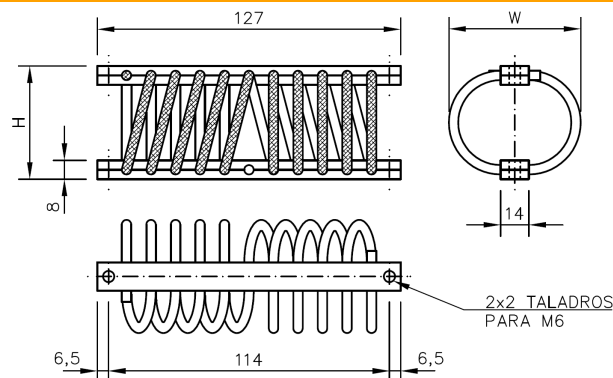
APPLICATIONS

Shock Absorber mount to isolate vibrations and shocks. Initially developed for Military uses but over the years it was adopted for many other industrial and transport applications.

DESCRIPTION

- Stainless Steel AISI 316 wire rope and inserts.
- Retainer Bars: Aluminium 6060-T6, Alodine treatment or stainless Steel upon request.
- Number of Full Loops: 10.
- Non Magnetic.
- Maximum resonance amplitude: 1,5 mm peak-peak.
- Natural frequency: 5 to 15 Hz.
- Damping weight: 0,12 Kg.
- Fastening: M6 or M6 drilled (A= Counterboring, L= Plain, R= Screwed)

DIMENSIONAL FEATURES



PART. NUMBER	H(mm)	L(mm)	CONFIGURATION	Nominal Load (daN)	Nominal Defl. (mm)	K (daN/mm)	Max. Load (daN)	Max. Defl. (mm)	K (daN/mm)
ACC-4030-01	41	49	Compression	6-10	2,5-5	1,6	26	18	1,2
			Compression 45°	4,6-7,9	2,5-5	1,3	20,7	18	1,0
			Shear	1,3-2,4	2,5-5	0,4	12	22	0,6
			Roll	1,5-2,6	2,5-5	0,4	9,5	22	0,4
ACC-4030-02	38	47	Compression	7-12	2,2-4,4	2,3	30	14	1,9
			Compression 45°	5,1-9,5	2,2-4,4	2,0	24,3	14	1,5
			Shear	2-3,5	2,2-4,4	0,7	10	14	0,7
			Roll	2,2-3,8	2,2-4,4	0,7	12	15	0,8
ACC-4030-03	36	44	Compression	6,5-12	2-4	2,8	30	12	2,3
			Compression 45°	5,2-9,8	2-4	2,3	24	12	1,8
			Shear	2-4,5	2-4	1,3	14	12	1,2
			Roll	2,3-4,2	2-4	1,0	13,5	14	0,9
ACC-4030-04	33	40	Compression	9-16,5	1,7-3,4	4,4	33	9	2,9
			Compression 45°	6,7-12,4	1,7-3,4	3,4	26,7	9	2,6
			Shear	3-5	1,7-3,4	1,2	13	9	1,4
			Roll	2,5-4,5	1,7-3,4	1,2	16	12,5	1,3
ACC-4030-05	30	39	Compression	13-23,5	1,4-2,8	7,5	47,5	8	4,6
			Compression 45°	10,2-17,5	1,4-2,8	5,2	39,4	8	4,2
			Shear	4-7	1,4-2,8	2,1	30	10	3,2
			Roll	2,8-5	1,4-2,8	1,6	18	10	1,8
ACC-4030-06	28	37	Compression	8-14	1,2-2,4	5,0	45	12	3,2
			Compression 45°	6,6-11,1	1,2-2,4	3,8	28,8	8	3,2
			Shear	5-8	1,2-2,4	2,5	25,5	8	3,1
			Roll	3,5-6,5	1,2-2,4	2,5	17,5	8	2,0

WIRE ROPE MOUNT ACC-4040



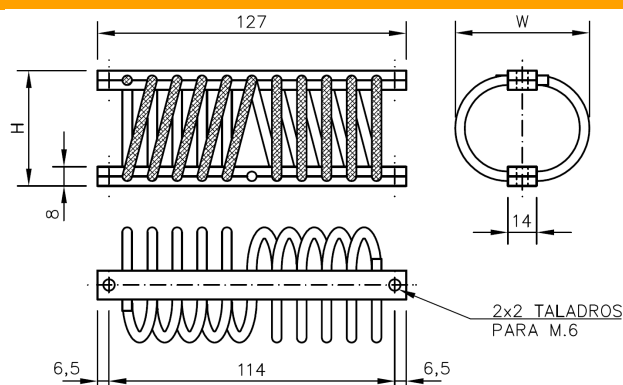
APPLICATIONS

Shock Absorber mount to isolate vibrations and shocks. Initially developed for Military uses but over the years it was adopted for many other industrial and transport applications.

DESCRIPTION

- Stainless Steel AISI 316 wire rope and inserts.
- Retainer Bars: Aluminium 6060-T6, Alodine treatment or stainless Steel upon request.
- Number of Full Loops: 10.
- Non Magnetic.
- Maximum resonance amplitude: 1,5 mm peak-peak.
- Natural frequency: 5 to 15 Hz.
- Damping weight: 0,155 Kg.
- Fastening: M6 or M6 drilled (A= Counterboring, L= Plain, R= Screwed)

DIMENSIONAL FEATURES



PART. NUMBER	H(mm)	L(mm)	CONFIGURATION	Nominal Load (daN)	Nominal Defl. (mm)	K (daN/mm)	Max. Load (daN)	Max. Defl. (mm)	K (daN/mm)
ACC-4040-01	38	44	Compression	25-44	2,2-4,4	8,6	100	14	5,8
			Compression 45°	20,1-34,5	2,2-4,4	6,5	84,3	14	5,2
			Shear	7-12	2,2-4,4	2,3	37	14	2,6
			Roll	7,5-12,5	2,2-4,4	2,3	37	14	2,6
ACC-4040-02	33	40	Compression	25-47	1,7-3,4	12,9	82	7	9,7
			Compression 45°	20,7-37,6	1,7-3,4	9,9	64,5	7	7,5
			Shear	10-20	1,7-3,4	5,9	40	7	5,6
			Roll	7,5-15	1,7-3,4	4,4	40	10	3,8
ACC-4040-03	28	37	Compression	46-80	1,2-2,4	28,3	150	6	19,4
			Compression 45°	38-62,1	1,2-2,4	20,1	137,8	6,5	18,5
			Shear	14-28	1,2-2,4	11,7	88	6,5	14,6
			Roll	9-21	1,2-2,4	10,0	57	6,5	8,8

WIRE ROPE MOUNT ACC-4050



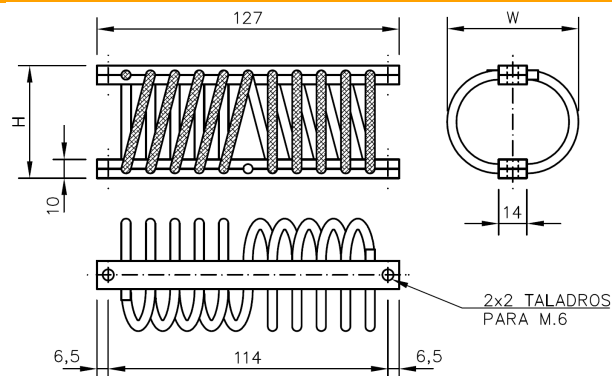
APPLICATIONS

Shock Absorber mount to isolate vibrations and shocks. Initially developed for Military uses but over the years it was adopted for many other industrial and transport applications.

DESCRIPTION

- Stainless Steel AISI 316 wire rope and inserts.
- Retainer Bars: Aluminium 6060-T6, Alodine treatment or stainless Steel upon request.
- Number of Full Loops: 10.
- Non Magnetic.
- Maximum resonance amplitude: 1,5 mm peak-peak.
- Natural frequency: 5 to 15 Hz.
- Damping weight: 0,26 Kg.
- Fastening: M6 or M6 drilled (A= Counterboring, L= Plain, R= Screwed)

DIMENSIONAL FEATURES



PART. NUMBER	H(mm)	L(mm)	CONFIGURATION	Nominal Load (daN)	Nominal Defl. (mm)	K (daN/mm)	Max. Load (daN)	Max. Defl. (mm)	K (daN/mm)
ACC-4050-01	34	39	Compression	22-40,5	1,4-2,8	13,2	87	6,5	12,6
			Compression 45°	21,9-35	1,4-2,8	9,4	77,1	6,5	11,4
			Shear	17,5-32	1,4-2,8	10,4	70	6,5	10,3
			Roll	16-28	1,4-2,8	8,6	62	6,5	9,2
ACC-4050-02	31	37	Compression	35-68	1,1-2,2	30,0	180	6	29,5
			Compression 45°	31,6-60	1,1-2,2	25,8	131,9	6	18,9
			Shear	17-33	1,1-2,2	14,5	96	6	16,6
			Roll	11,5-22,5	1,1-2,2	10,0	65	6	11,2
ACC-4050-03	43	55	Compression	25-48	2,3-4,6	10,0	140	18	6,9
			Compression 45°	20,1-38,6	2,3-4,6	8,0	99,1	15	5,8
			Shear	8-16	2,3-4,6	3,5	62	15	4,4
			Roll	8,5-14,5	2,3-4,6	2,6	42,5	15	2,7
ACC-4050-04	87	95	Compression	8,5-15,5	6,7-13,4	1,0	40	45	0,8
			Compression 45°	6,9-12,1	6,7-13,4	0,8	31,6	45	0,6
			Shear	2,3-4,1	6,7-13,4	0,3	11,5	45	0,2
			Roll	2,9-4,5	6,7-13,4	0,2	11,2	45	0,2
ACC-4050-05	43	50	Compression	24-42	2,3-4,6	7,8	76	9	7,7
			Compression 45°	20-33,4	2,3-4,6	5,8	59,9	9	6,0
			Shear	10-16	2,3-4,6	2,6	60	17	3,5
			Roll	7-13	2,3-4,6	2,6	38	15	2,4
ACC-4050-06	38	47	Compression	27-45	1,8-3,6	10,0	115	12	8,3
			Compression 45°	23,6-34,4	1,8-3,6	6,0	80,7	9	8,6
			Shear	11-18	1,8-3,6	3,9	50	10	5,0
			Roll	12-21	1,8-3,6	5,0	45,5	9	4,5

WIRE ROPE MOUNT ACC-4060



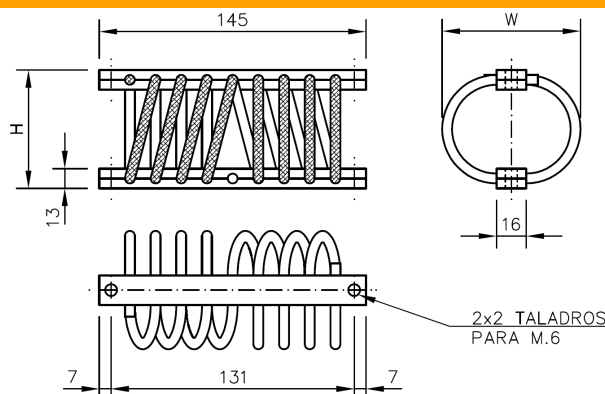
APPLICATIONS

Shock Absorber mount to isolate vibrations and shocks. Initially developed for Military uses but over the years it was adopted for many other industrial and transport applications.

DESCRIPTION

- Stainless Steel AISI 316 wire rope and inserts.
- Retainer Bars: Aluminium 6060-T6, Alodine treatment or stainless Steel upon request.
- Number of Full Loops: 8.
- Non Magnetic.
- Maximum resonance amplitude: 1,5 mm peak-peak.
- Natural frequency: 5 to 15 Hz.
- Damping weight: 0,35 Kg.
- Fastening: M6 or M6 drilled (A= Counterboring, L= Plain, R= Screwed)

DIMENSIONAL FEATURES



PART. NUMBER	H(mm)	L(mm)	CONFIGURATION	Nominal Load (daN)	Nominal Defl. (mm)	K (daN/mm)	Max. Load (daN)	Max. Defl. (mm)	K (daN/mm)
ACC-4060-01	90	102	Compression	14-26,5	6,4-12,8	2,0	54,0	40	1,0
			Compression 45°	11,6-20,9	6,4-12,8	1,5	42,7	35	1,0
			Shear	5,5-8	6,4-12,8	0,4	22,0	35	0,6
			Roll	5,3-7,6	6,4-12,8	0,4	15,2	35	0,3
ACC-4060-02	80	102	Compression	11-20,5	5,4-10,8	1,8	53,0	34	1,4
			Compression 45°	8,3-15,7	5,4-10,8	1,4	42,7	34	1,2
			Shear	3,8-6,3	5,4-10,8	0,5	16,8	34	0,5
			Roll	4,9-7,8	5,4-10,8	0,5	18,0	34	0,4
ACC-4060-03	64	80	Compression	29-54	3,8-7,6	6,6	118,0	22	4,4
			Compression 45°	25-37,2	3,8-7,6	3,2	94,8	22	4,0
			Shear	11-21	3,8-7,6	2,6	90	26	3,8
			Roll	9-17,5	3,8-7,6	2,2	40,5	22	1,6
ACC-4060-04	60	71	Compression	28-47	3,4-6,8	5,6	120,0	22	4,8
			Compression 45°	19,8-38,5	3,4-6,8	5,5	97,1	22	3,9
			Shear	8-15	3,4-6,8	2,1	45,5	22	2,0
			Roll	8,5-14,5	3,4-6,8	1,8	38,0	22	1,5
ACC-4060-05	54	64	Compression	27,5-53	2,8-5,6	9,1	133,0	18	6,5
			Compression 45°	20,7-41,1	2,8-5,6	7,3	107,4	18	5,3
			Shear	11-18,5	2,8-5,6	2,7	62,0	18	3,5
			Roll	9-17	2,8-5,6	2,9	46,0	18	2,3
ACC-4060-06	48	57	Compression	30-50	2,2-4,4	9,1	105	10	9,8
			Compression 45°	21,7-36,6	2,2-4,4	6,8	75,8	9	8,5
			Shear	12,5-23,5	2,2-4,4	5,0	46,0	9	4,9
			Roll	9-20	2,2-4,4	5,0	65	14	4,7

WIRE ROPE MOUNT ACC-4100



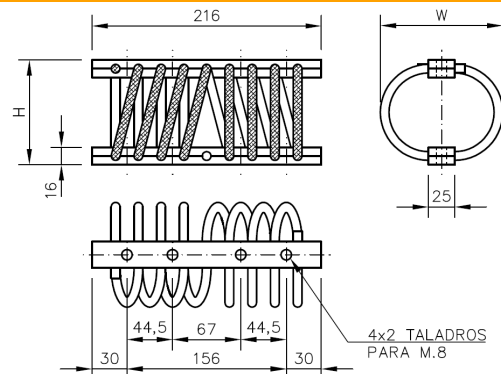
APPLICATIONS

Shock Absorber mount to isolate vibrations and shocks. Initially developed for Military uses but over the years it was adopted for many other industrial and transport applications.

DESCRIPTION

- Stainless Steel AISI 316 wire rope and inserts.
- Retainer Bars: Aluminium 6060-T6, Alodine treatment or stainless Steel upon request.
- Number of Full Loops: 8.
- Non Magnetic.
- Maximum resonance amplitude: 1,5 mm peak-peak.
- Natural frequency: 5 to 15 Hz.
- Damping weight: 1.4 Kg.
- Fastening: M8 or M8 drilled (A= Counterboring, L= Plain, R= Screwed)

DIMENSIONAL FEATURES



PART. NUMBER	H(mm)	L(mm)	CONFIGURATION	Nominal Load (daN)	Nominal Defl. (mm)	K (daN/mm)	Max. Load (daN)	Max. Defl. (mm)	K (daN/mm)
ACC-4100-01	77	104	Compression	43-78	4,5-9	7,8	171	27	5,2
			Compression 45°	36,2-63,6	4,5-9	6,1	160,9	27	5,4
			Shear	22,5-44	4,5-9	4,8	135	27	5,1
			Roll	27-43	4,5-9	3,6	125	27	4,6
ACC-4100-02	68	80	Compression	127-210	3,6-7,2	23,1	380	16	19,3
			Compression 45°	92,6-160,1	3,6-7,2	18,8	302,2	16	16,1
			Shear	40-77	3,6-7,2	10,3	180	16	11,7
			Roll	24-55	3,6-7,2	8,6	185	24	7,7
ACC-4100-03	110	135	Compression	40-73	7,8-15,6	4,2	192	55	3,0
			Compression 45°	34,2-57,9	7,8-15,6	3,0	156,9	55	2,5
			Shear	13-21,5	7,8-15,6	1,1	67,5	55	1,2
			Roll	14,5-23	7,8-15,6	1,1	102	55	2,0
ACC-4100-04	89	108	Compression	55-100	5,7-11,4	7,9	270	40	5,9
			Compression 45°	40,8-81,9	5,7-11,4	7,2	198,6	33	5,4
			Shear	23-42	5,7-11,4	3,3	133	33	4,2
			Roll	25-43	5,7-11,4	3,2	148	36	4,3
ACC-4100-05	74	90	Compression	77-148	4,2-8,4	16,9	400	29	12,2
			Compression 45°	59,2-111,7	4,2-8,4	12,5	293,5	26	10,3
			Shear	38-68	4,2-8,4	7,1	240	26	9,8
			Roll	30-52	4,2-8,4	5,2	200	28	7,6
ACC-4100-06	70	84	Compression	67-145	3,8-7,6	20,5	380	24	14,3
			Compression 45°	55,9-108,5	3,8-7,6	13,8	235,1	18	12,2
			Shear	38-72	3,8-7,6	8,9	174	18	9,8
			Roll	31-50	3,8-7,6	5,0	200	27	7,7

WIRE ROPE MOUNT ACC-4130



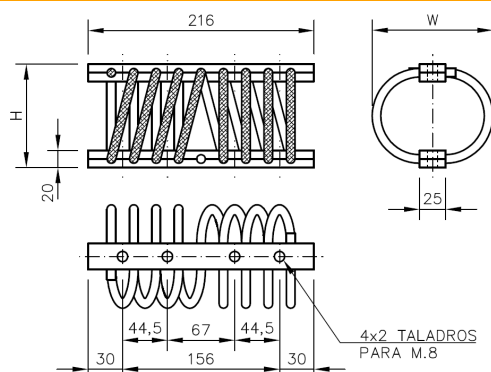
APPLICATIONS

Shock Absorber mount to isolate vibrations and shocks. Initially developed for Military uses but over the years it was adopted for many other industrial and transport applications.

DESCRIPTION

- Stainless Steel AISI 316 wire rope and inserts.
- Retainer Bars: Aluminium 6060-T6, Alodine treatment or stainless Steel upon request.
- Number of Full Loops: 8.
- Non Magnetic.
- Maximum resonance amplitude: 1,5 mm peak-peak.
- Natural frequency: 5 to 15 Hz.
- Damping weight: 2,2Kg.
- Fastening: M8 or M8 drilled (A= Counterboring, L= Plain, R= Screwed)

DIMENSIONAL FEATURES



PART. NUMBER	H(mm)	L(mm)	CONFIGURATION	Nominal Load (daN)	Nominal Defl. (mm)	K (daN/mm)	Max. Load (daN)	Max. Defl. (mm)	K (daN/mm)
ACC-4130-01	108	133	Compression	175-310	6,8-13,6	19,9	670	40	13,6
			Compression 45°	123,4-231,4	6,8-13,6	15,9	554,3	40	12,2
			Shear	48-85	6,8-13,6	5,4	253	40	6,4
			Roll	42-75	6,8-13,6	4,9	215	40	5,3
ACC-4130-02	83	102	Compression	200-370	4,3-8,6	39,5	790	22	31,3
			Compression 45°	150,4-283,1	4,3-8,6	30,9	628,6	22	25,8
			Shear	86-158	4,3-8,6	16,7	385	22	16,9
			Roll	69-122	4,3-8,6	12,3	335	22	15,9
ACC-4130-03	110	150	Compression	105-200	7-14	13,6	500	44	10,0
			Compression 45°	90,4-156,2	7-14	9,4	392,7	44	7,9
			Shear	40-70	7-14	4,3	173	44	3,4
			Roll	46-77	7-14	4,4	216	44	4,6
ACC-4130-04	95	120	Compression	185-315	5,5-11	23,6	780	35	19,4
			Compression 45°	127,1-237,2	5,5-11	20,0	513,3	27	17,3
			Shear	58-97	5,5-11	7,1	210	27	7,1
ACC-413005	90	105	Compression	215-380	5-10	33,0	720	28	18,9
			Compression 45°	184,4-287,4	5-10	20,6	682,5	30	19,8
			Shear	75-135	5-10	12,0	450	30	15,8
			Roll	52-85	5-10	6,6	250	30	8,3
ACC-4130-06	75	92	Compression	275-492	3,5-7	62,0	860	14	52,6
			Compression 45°	218,5-384,5	3,5-7	47,4	690,3	14	43,7
			Shear	118-217	3,5-7	28,3	600	18	34,8
			Roll	107-187	3,5-7	22,9	480	18	26,6

WIRE ROPE MOUNT ACC-4160



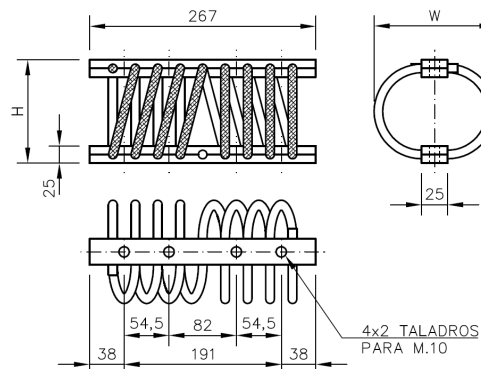
APPLICATIONS

Shock Absorber mount to isolate vibrations and shocks. Initially developed for Military uses but over the years it was adopted for many other industrial and transport applications.

DESCRIPTION

- Stainless Steel AISI 316 wire rope and inserts.
- Retainer Bars: Aluminium 6060-T6, Alodine treatment or stainless Steel upon request.
- Number of Full Loops: 8.
- Non Magnetic.
- Maximum resonance amplitude: 1,5 mm peak-peak.
- Natural frequency: 5 to 15 Hz.
- Damping weight: 3,8Kg.
- Fastening: M10 or M10 drilled (A= Counterboring, L= Plain, R= Screwed)

DIMENSIONAL FEATURES



PART. NUMBER	H(mm)	L(mm)	CONFIGURATION	Nominal Load (daN)	Nominal Defl. (mm)	K (daN/mm)	Max. Load (daN)	Max. Defl. (mm)	K (daN/mm)
ACC-4160-01	150	170	Compression	160-290	10-20	13,0	700	64	9,3
			Compression 45°	114,6-211	10-20	9,6	451,2	50	8,0
			Shear	60-100	10-20	4,0	255	50	5,2
			Roll	40-70	10-20	3,0	240	60	4,3
ACC-4160-02	110	135	Compression	220-400	6-12	30,0	1100	40	25,0
			Compression 45°	184,1-318,9	6-12	22,5	747,9	33	20,4
			Shear	63-114	6-12	8,5	246	33	6,3
			Roll	71-125	6-12	9,0	370	35	10,7
ACC-4160-03	100	125	Compression	240-425	5-10	37,0	960	28	29,7
			Compression 45°	196,5-320,9	5-10	24,9	698,1	24	26,9
			Shear	103-180	5-10	15,4	370	24	13,6
			Roll	68-115	5-10	9,4	420	32	13,9
ACC-4160-04	100	112	Compression	330-605	5-10	55,0	1375	26	48,1
			Compression 45°	293,5-445,1	5-10	30,3	1078,3	26	39,6
			Shear	105-170	5-10	13,0	365	26	12,2
			Roll	96-169	5-10	14,6	415	26	15,4
ACC-4160-05	95	112	Compression	250-470	4,5-9	48,9	1380	28	47,9
			Compression 45°	216,9-346,1	4,5-9	28,7	812,7	22	35,9
			Shear	160-305	4,5-9	32,2	750	22	34,2
			Roll	100-164	4,5-9	14,2	490	28	17,2
ACC-4160-06	90	102	Compression	355-630	4-8	68,8	1325	17	77,2
			Compression 45°	289,7-482,2	4-8	48,1	992,2	17	56,7
			Shear	150-260	4-8	27,5	700	23	29,3
			Roll	64-108	4-8	11,0	380	28	13,6

WIRE ROPE MOUNT ACC-4220



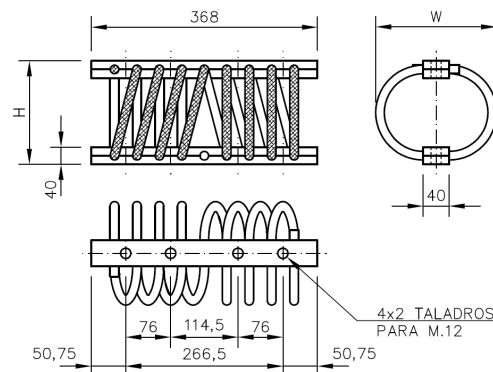
APPLICATIONS

Shock Absorber mount to isolate vibrations and shocks. Initially developed for Military uses but over the years it was adopted for many other industrial and transport applications.

DESCRIPTION

- Stainless Steel AISI 316 wire rope and inserts.
- Retainer Bars: Aluminium 6060-T6, Alodine treatment or stainless Steel upon request.
- Number of Full Loops: 8.
- Non Magnetic.
- Maximum resonance amplitude: 1,5 mm peak-peak.
- Natural frequency: 5 to 15 Hz.
- Damping weight: 10,5Kg.
- Fastening: M12 or M12 drilled (A= Counterboring, L= Plain, R= Screwed)

DIMENSIONAL FEATURES



PART. NUMBER	H(mm)	L(mm)	CONFIGURATION	Nominal Load (daN)	Nominal Defl. (mm)	K (daN/mm)	Max. Load (daN)	Max. Defl. (mm)	K (daN/mm)
ACC-4220-01	160	178	Compression	450-750	8-16	37,5	1500	42	35,7
			Compression 45°	291,5-566,5	8-16	34,4	945,8	28	31,6
			Shear	168-260	8-16	11,5	400	28	11,7
			Roll	150-275	8-16	15,6	660	40	16,0
ACC-4220-02	160	195	Compression	325-620	8-16	36,9	1750	54	29,7
			Compression 45°	262,5-497,3	8-16	29,4	933,4	36	21,8
			Shear	140-220	8-16	10,0	435	36	10,8
			Roll	100-175	8-16	9,4	500	48	10,2
ACC-4220-03	150	165	Compression	440-800	7-14	51,4	1930	36	51,4
			Compression 45°	409,7-627,7	7-14	31,1	1439,6	36	36,9
			Shear	220-400	7-14	25,7	1200	40	30,8
			Roll	125-220	7-14	13,6	600	36	17,3
ACC-4220-04	132	140	Compression	770-1525	5,2-10,4	145,2	3500	31	95,9
			Compression 45°	587,4-1092,5	5,2-10,4	97,1	2190	22	94,6
			Shear	285-570	5,2-10,4	54,8	1600	28	58,5
			Roll	165-295	5,2-10,4	25,0	890	30	30,4

WIRE ROPE MOUNT ACC-4230



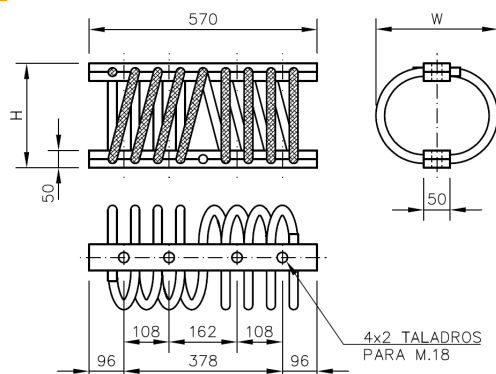
APPLICATIONS

Shock Absorber mount to isolate vibrations and shocks. Initially developed for Military uses but over the years it was adopted for many other industrial and transport applications.

DESCRIPTION

- Stainless Steel AISI 316 wire rope and inserts.
- Retainer Bars: Aluminium 6060-T6, Alodine treatment or stainless Steel upon request.
- Number of Full Loops: 8.
- Non Magnetic.
- Maximum resonance amplitude: 1,5 mm peak-peak.
- Natural frequency: 5 to 15 Hz.
- Damping weight: 23,0Kg.
- Fastening: M18 or M18 drilled (A= Counterboring, L= Plain, R= Screwed)

DIMENSIONAL FEATURES



PART. NUMBER	H(mm)	L(mm)	CONFIGURATION	Nominal Load (daN)	Nominal Defl. (mm)	K (daN/mm)	Max. Load (daN)	Max. Defl. (mm)	K (daN/mm)
ACC-4230-01	235	260	Compression	178-582	14-28	28,9	2250	115	19,2
			Compression 45°	102-379	14-28	19,8	2200	160	13,8
			Shear	186-309	14-28	8,8	400	60	2,8
			Roll	186-309	14-28	8,8	400	60	2,8
ACC-4230-02	216	240	Compression	123-705	14-28	41,6	2700	105	25,9
			Compression 45°	36-410	14-28	26,7	2500	150	17,1
			Shear	119-135	14-28	1,1	525	60	12,2
			Roll	119-135	14-28	1,1	525	60	12,2
ACC-4230-03	178	216	Compression	30-794	8-16	95,5	3200	70	44,6
			Compression 45°	34-480	8-16	55,8	3000	100	30,0
			Shear	167-252	8-16	10,6	650	60	9,0
			Roll	167-252	8-16	10,6	650	60	9,0

WIRE ROPE MOUNT ACC-4240



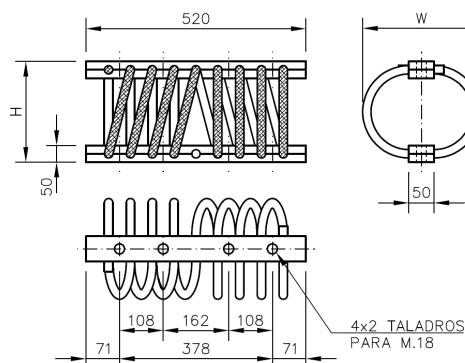
APPLICATIONS

Shock Absorber mount to isolate vibrations and shocks. Initially developed for Military uses but over the years it was adopted for many other industrial and transport applications.

DESCRIPTION

- Stainless Steel AISI 316 wire rope and inserts.
- Retainer Bars: Aluminium 6060-T6, Alodine treatment or stainless Steel upon request.
- Number of Full Loops: 8.
- Non Magnetic.
- Maximum resonance amplitude: 1,5 mm peak-peak.
- Natural frequency: 5 to 15 Hz.
- Damping weight: 24,0Kg.
- Fastening: M18 or M18 drilled (A= Counterboring, L= Plain, R= Screwed)

DIMENSIONAL FEATURES



PART. NUMBER	H(mm)	L(mm)	CONFIGURATION	Nominal Load (daN)	Nominal Defl. (mm)	K (daN/mm)	Max. Load (daN)	Max. Defl. (mm)	K (daN/mm)
ACC-4240-01	214	256	Compression	680-1200	11,4-22,8	45,61	5700	90	66,96
			Compression 45°	679,4-1230,7	11,4-22,8	48,36	3200	90	29,31
			Shear	730-1300	11,4-22,8	50,00	5000	90	55,06
			Roll	640-1220	11,4-22,8	50,88	5000	90	56,25
ACC-4240-02	180	224	Compression	1400-2150	8-16	93,75	7200	60	114,77
			Compression 45°	1448-2292	8-16	105,50	4000	60	38,82
			Shear	1050-1830	8-16	97,50	6300	60	101,59
			Roll	1160-1970	8-16	101,25	6300	60	98,41